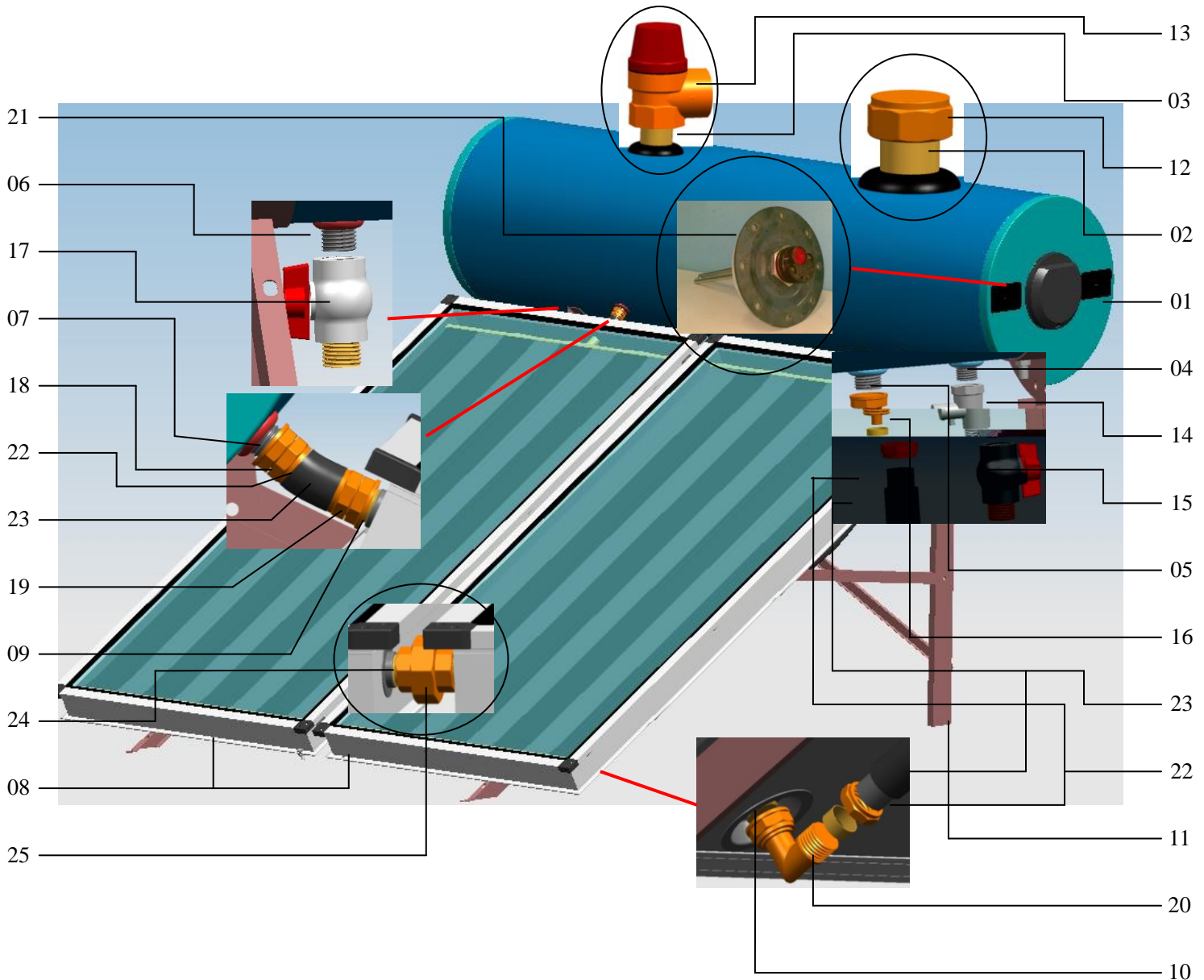


# TES HYPERION

## Installation Instructions of Hyperion Double Collectors models

Before installation, please make sure that the place where you want to set should be with rich sunshine and stable, no cover such as trees and buildings, and so on.

### 1. Explanation and drawing for parts

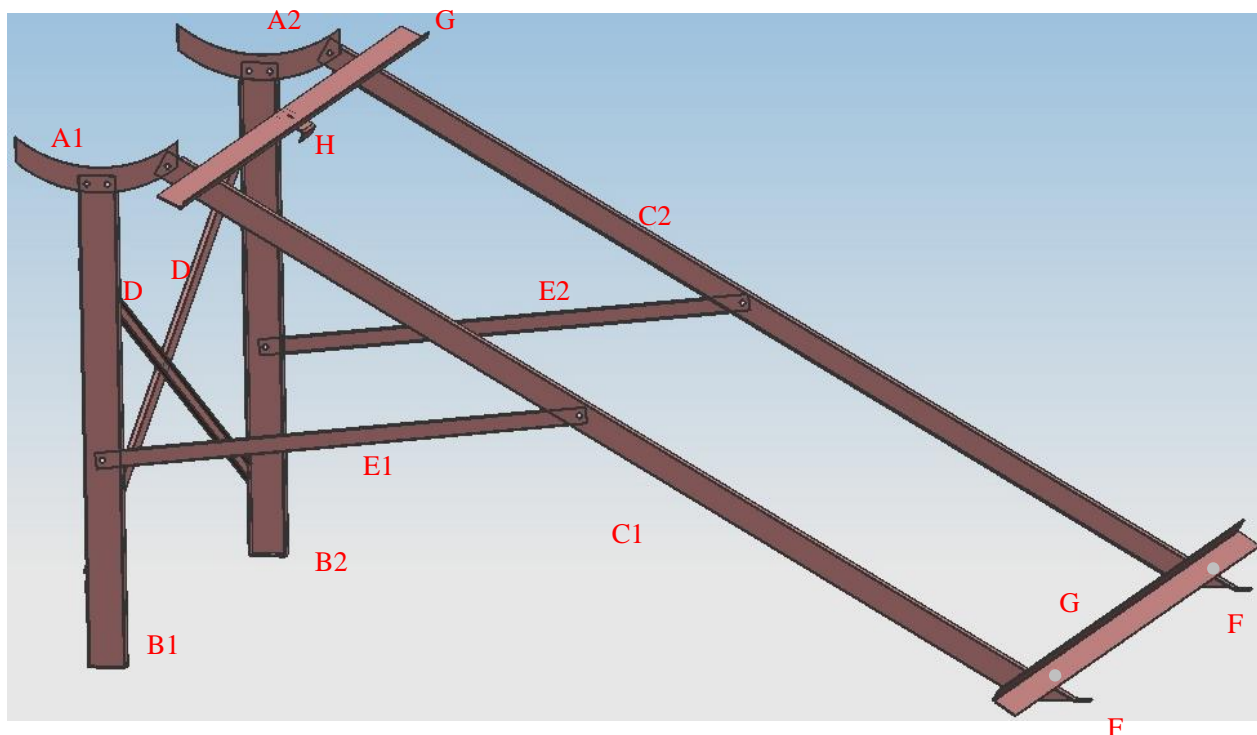


- 01 Boiler
- 02 Anti-freezer inlet (1/2")
- 03 Anti-freezer inlet (1/2")
- 04 Inlet pipe from water supply to boiler (1/2")
- 05 Anti-freezer outlet pipe from boiler to collector (3/4")

- 06 Hot water outlet pipe (3/4")
- 07 Anti-freezer inlet pipe from collector to boiler (3/4")
- 08 Collector
- 09 Anti-freezer outlet pipe from collector to boiler (3/4")
- 10 Anti-freezer inlet pipe from boiler to collector (3/4")
- 11 Support
- 12 (1/2") End cap
- 13 Safety valve
- 14 Single direction valve (1/2")
- 15 Connecting valve for water supply and single direction valve (1/2", provided by client)
- 16 Moufa for connecting anti-freezer outlet pipe from boiler to collector (3/4")
- 17 Connecting valve for hot water outlet pipe (3/4", be provided by the client)
- 18 Moufa for connecting anti-freezer inlet pipe from collector to boiler (3/4")
- 19 Moufa for connecting anti-freezer outlet pipe from collector to boiler (3/4")
- 20 Connecting elbow for anti-freezer inlet pipe from boiler to collector (3/4")
- 21 Thermostat components
- 22 PEX black pipe
- 23 Thermal insulation pipe
- 24 Connecting pipe between two collectors
- 25 Union connector of connecting pipe between two collectors

## 2. Installation for support

### 1. Explanation for support parts



- A1、A2 Bracket (left, right)
- B1、B2 Vertical stand (left, right)
- C1、C2 Slanting stand (left, right)
- D Crossed stand
- E1、E2 Triangle stand (left, right)
- F Foot
- G Horizontal strip
- H Support plate

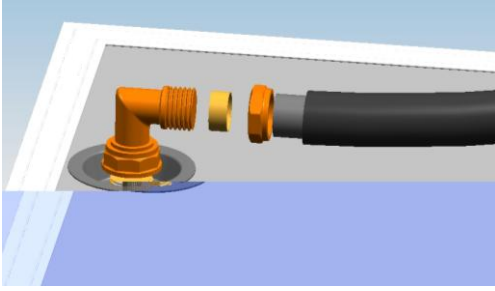
### 2. Installation for support

- a. Use M8 screws to connect Bracket A and Vertical Stand B.
- b. Set and fix two Crossed Stands back to back with M8 screws.
- c. Connect two Vertical Stands B with two fixed Crossed Stands.
- d. Connect Slanting Stands with Bracket.
- e. Use Triangle Stand to connect Vertical Stands and Slanting Stands.
- f. Set feet and one Horizontal strip (that without hole in the middle) to the bottom of Slanting Stands, do not tighten, should keep 2-3mm loose.

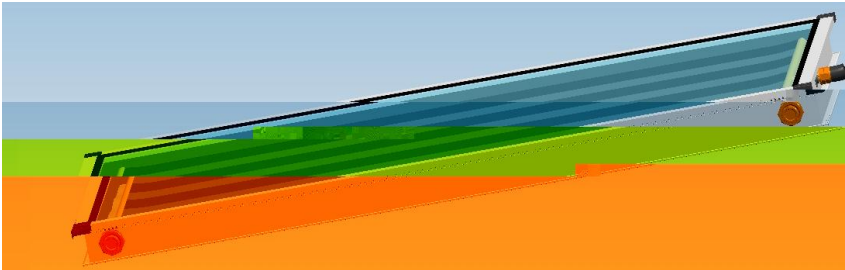
### 3. Installation for solar water heater

1. After set support, put it at the place where want to set Boiler. At the bottom of two Vertical Stands and Feet have one hole respectively, mark and make holes on the ground. Use M8 setscrew to fix, then remove feet from Slanting Stands, only tighten ground screws of Vertical Stands. (These M8 setscrews be provided by client)
2. Find the collector with inlet and outlet pipes, and put the bottom of it up. Connect and fix 3/4" elbow with Anti-freezer inlet pipe from boiler to collector, and keep the mouth of elbow upward.

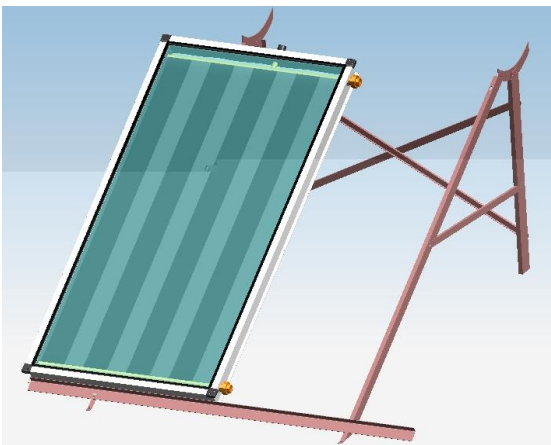
Connect one PEX Black Pipe with elbow, and then with Thermal Insulation Pipe. (as picture)



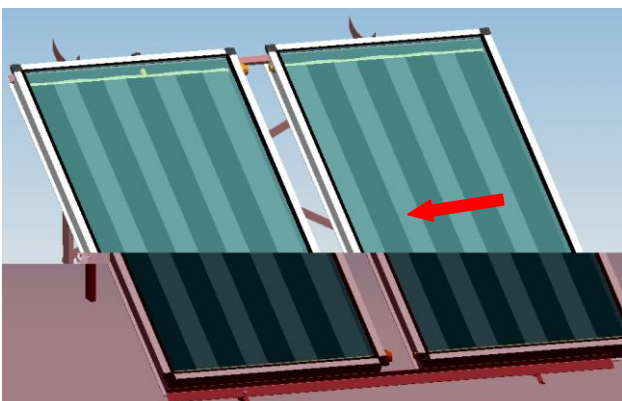
3. For the other collector, assemble 3/4" moufa to the outside thread connector which is on the top of collector. Then assemble the short PEX Black Pipe and Thermal Insulation Pipe. And on the right side of this collector, there are two 3/4" moufa, assemble two union connectors on them.



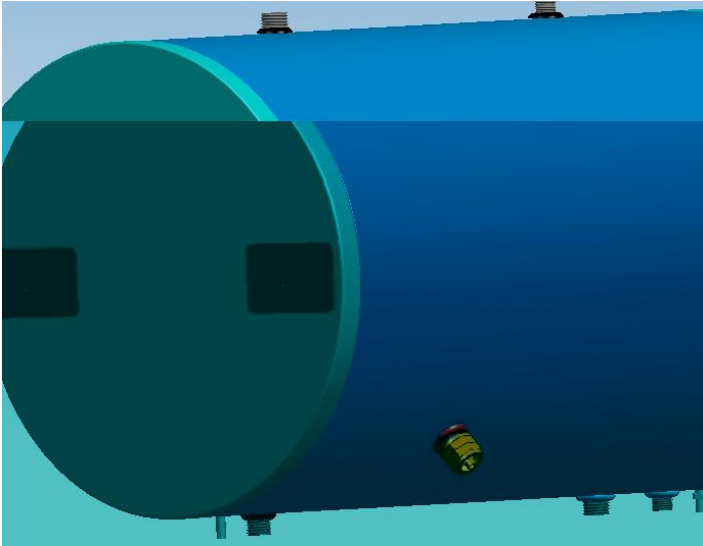
4. Put the collector mentioned in Step 3 on the support as picture, and keep the distance between the right border of the collector and the center of Horizontal Strip to be 15mm.



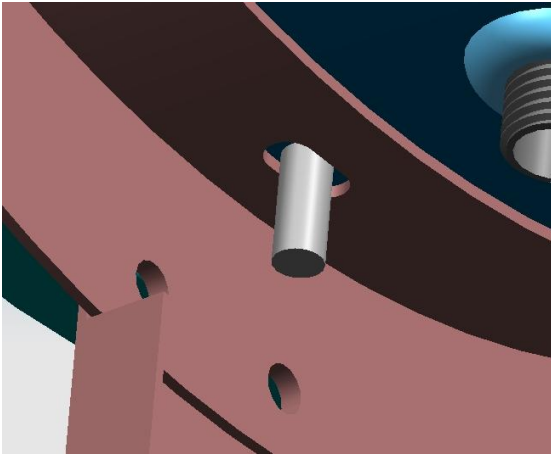
5. Make the left side of the collector mentioned in Step 2, i.e. the side with two connectors, toward the collector mentioned in last step, put it on the support, and push it to the center. When two outside thread connectors touch union connector, fix them. Then set the other Horizontal Strip on the top of Slanting Stands to clip two collectors, but do not fix tightly. Set support plate to the center hole of Horizontal Strip, also clip two collectors and do not fix tightly.



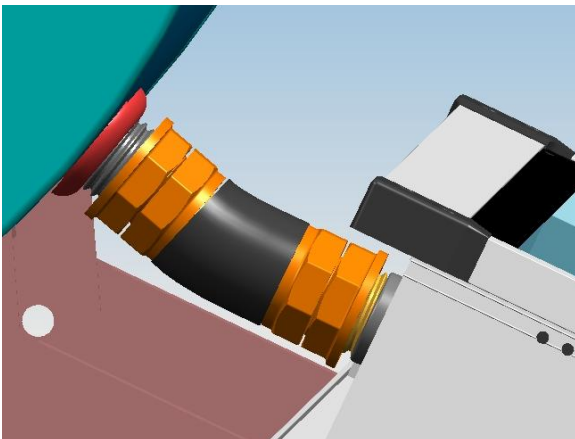
6. Assemble 3/4" moufa to the 3/4" pipe with 45° on the bottom of Boiler. (as picture)



7. Assemble Boiler on Support according to Explanation and Drawing for Parts, make two screw of boiler through holes on the top of Bracket, use M8 nut to fix.

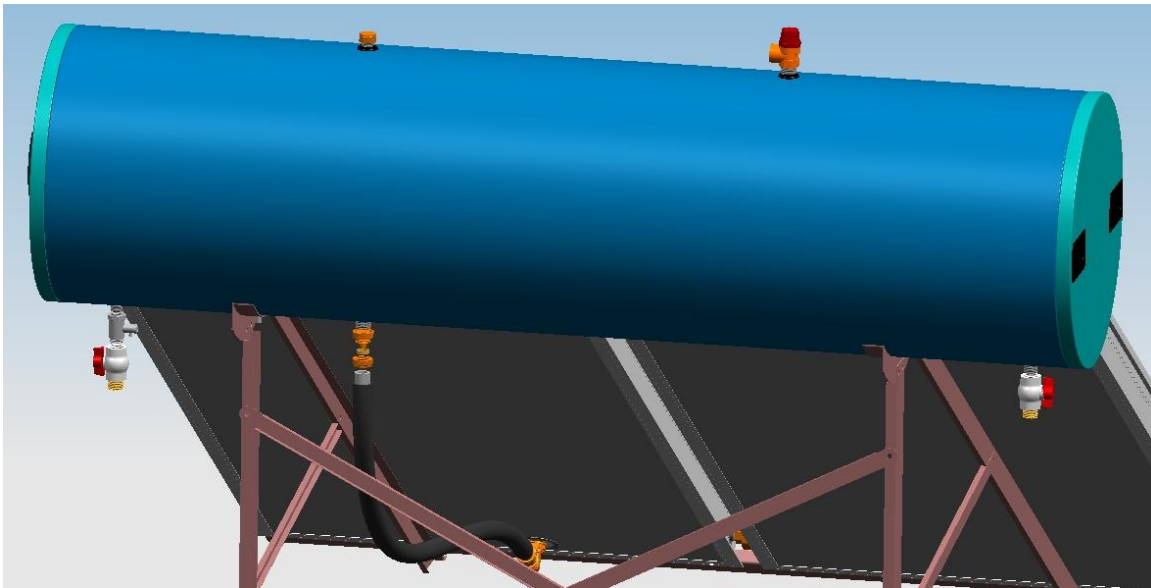


8. Move collector until the outside thread connector on the top of it be toward the 3/4" pipe with 45° on the bottom of Boiler. And connect well the 3/4" pipe of Boiler with PEX Black Pipe.



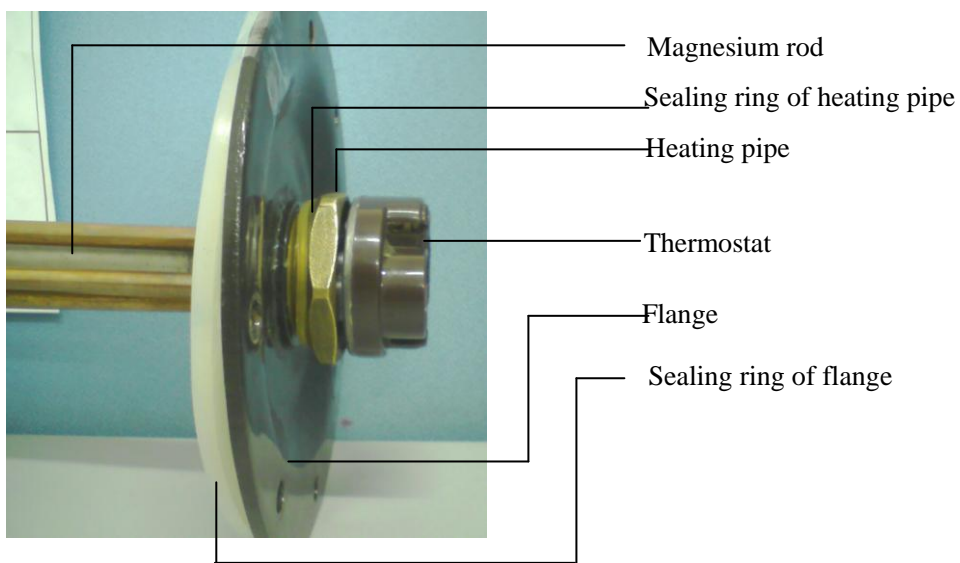
9. Fix Feet to the setscrew on the ground, and fix tightly all screw on the Horizontal Strip.

Assemble other parts one by one according to the picture.



#### 10. Installation for thermostat components

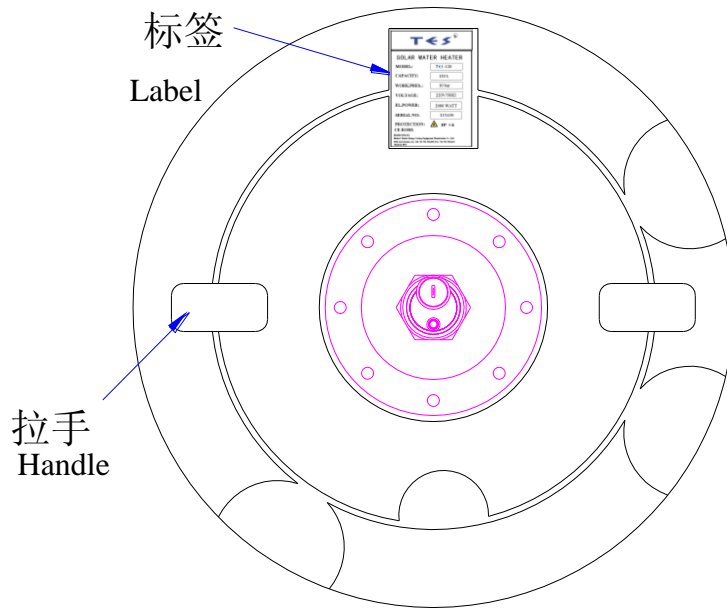
##### A. Explanation for parts of thermostat



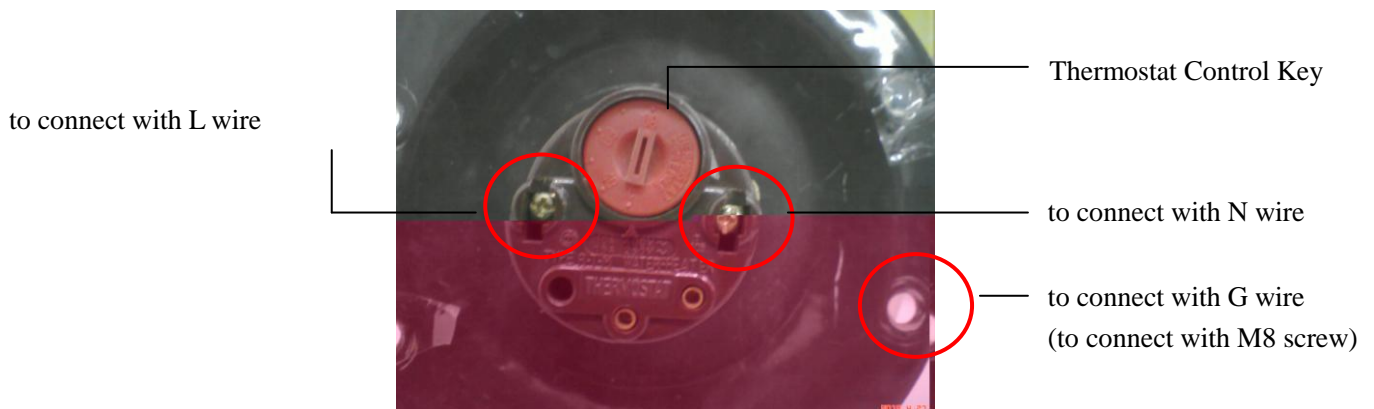
##### B. Installation for thermostat components

Firstly set sealing ring of Thermostat Components, secondly make the control key of Thermostat Components toward to the Label, so that the 8 holes on the Thermostat Components will be matched with holes on the Inside Boiler, use M8 screw to fix well.





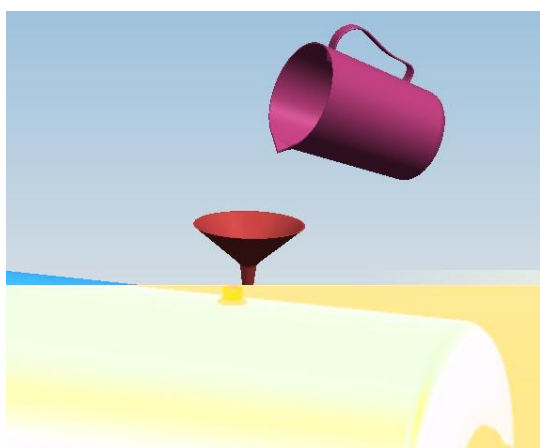
### C. Explanation for wires



- Turn off main power supply.
- Thermostat Components should be set on the right side of Boiler, loose two screws on the cap of Thermostat Components, connect N wire and L wire as picture, and then tighten screws.
- When the products leave factory, Thermostat will be set at 60° C, clients could set according to their needs. It would be better below 75° C.
- Check whether Safety Switch work or not, and press button for operating mode.
- Make 220V wire get through the wire hole of Big Black Disk, and then use screw to fix Big Black Disk to Boiler.
- The cable connector of Big Black Disk is on the opposite of the Label, use screw to fix Big Black Disk to the Boiler through 2 rings on the Big Black Disk.

- Note:
- Boiler should be set higher than Collector.
  - G wire should be connected to the ground of the building.
  - Power supply wire should be connected to the Leakage Switch. The distance between 2 wires should be more than 3mm. Leakage Switch should be checked once a month.
  - If no water in Boiler, cannot switch on Thermostat Components.

#### 4. Explanation for mixed liquid of water and anti-freezer



Please mix anti-freezer and water according to the proportion in the form below.

Mix anti-freezer and water in proportion.

Infuse the mixed liquid into heating pipe as picture.

Before infuse the mixed liquid, should use un-transparent thing to cover collector. After infused, tighten Safety Valve, and then take off the cover.

During infusing, shake boiler and collector will be better, for expelling air inside the pipe.

The mixed liquid should be infused fully.

型号		TES 120X2.0m <sup>2</sup>	TES 160x2.5m <sup>2</sup>	TES 200x4m <sup>2</sup>	TES 250x4m <sup>2</sup>	TES 300x3m <sup>2</sup>	TES 300x5m <sup>2</sup>
混合液总容量		10lt	12lt	13lt	19lt	15lt	25lt
温度	比例						
-5°C	水 防冻液	8lt 2lt	10lt 2lt	10lt 3lt	16lt 3lt	11lt 4lt	5lt 20lt
-11°C	水 防冻液	7lt 3lt	9lt 3lt	9lt 4lt	15lt 4lt	10lt 5lt	19lt 6lt
-18°C	水 防冻液	6lt 4lt	8lt 4lt	8lt 5lt	14lt 5lt	9lt 6lt	18lt 7lt
-20°C	水 防冻液	6lt 4lt	8lt 4lt	8lt 5lt	14lt 5lt	9lt 6lt	18lt 7lt
-27°C	水 防冻液	5.5lt 4.5lt	7lt 5lt	7lt 6lt	13lt 6lt	8lt 7lt	17lt 8lt
-36°C	水 防冻液	5lt 5lt	6lt 6lt	6.5lt 6.5lt	9.5lt 9.5lt	7.5lt 7.5lt	12.5lt 12.5lt



## 5. Attention after installation:

- After finished installation, please do not use hot water in the coming 2 days to reach the best working status.
- Check anti-freezer periodically every year.
- If in the dust area, please clean the surface of collector in time.
- Once collector glass damage, please replace in time.
- At least once a year check the heater thoroughly, especially for the seaside area. If any problem, please inform installation workers in time. For the parts cost should be charged by the clients.
- If will not use for long time, use un-transparent thing to cover collector.